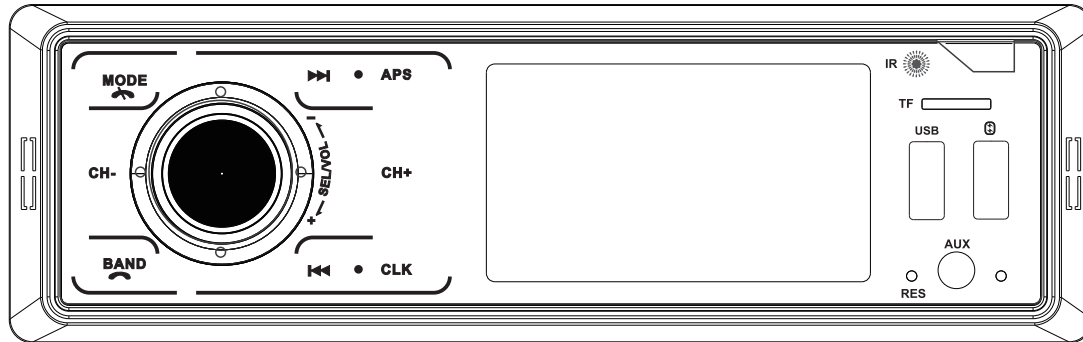


XOMAX

XM-R271

XM-R274

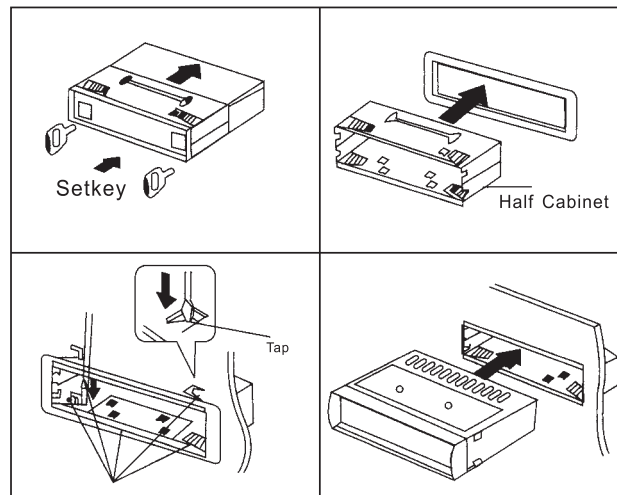


SD/MMC/USB/MP3/FM PLAYER/REMOTE/CLOCK/

Please read this users' manual
carefully before operation!

Installation Precautions:

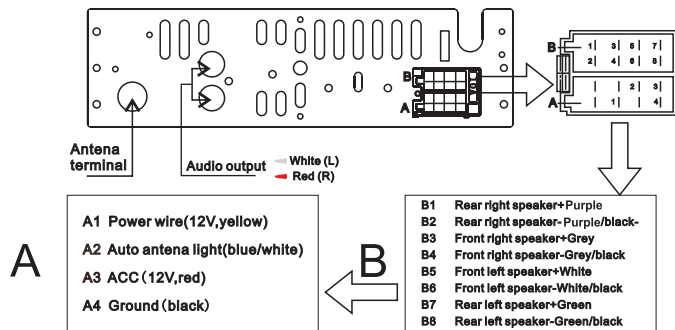
- 1.This unit shall be installed by professional personnels, if possible.
- 2.Please refer to the instruction manual for electrical application, wrong operation will cause damage to the unit.
- 3.Apply the power cord after all connections of the unit are set.
- 4.Insulate all exposed wires to avoid short circuit.
- 5.All loosen wires should be fixed after installation.
- 6.Read the application and operating carefully instructions for each part before installation.
- 7.The unit is designed for 12V-15V negative ground operation system only, make sure your vehicle is connected to such negative ground electrical system.
- 8 .Be sure to connect the unit in exact according to the lead-diagram, otherwise malfunctions or damages would be possible.



WARNINGS:

- ★ SHOULD ANTENNA LINE (BLUE ONE) BE GROUNDED OR WRONGLY CONNECTED, THE WHOLE UNIT WOULD BURN OUT OR FAIL TO TURN ON.
- ★ SHOULD POWER LINE (RED ONE) BE GROUNDED OR WRONGLY CONNECTED, THE WHOLE UNIT WOULD BURN OUT OR FAIL TO TURN ON OR LIGHT OUT.
- ★ SHOULD MEMORY LINE (YELLOW ONE) BE WRONGLY CONNECTED, THE WHOLE UNIT WOULD BURN OUT OR FAIL TO TURN ON OR LIGHT OUT.
- ★ THE SPEAKERS SHOULD BE CORRECTLY WIRED, OTHERWISE, THE SPEAKER AND THE AMPLIFIER IC WOULD BURN OUT OR SOUNDLESS.

Wiring Connections



- 1.This unit is applicable to 12V direct-current negative ground electrical system only.
- 2.In order to avoid short circuit, please disconnect the wire connecting terminal of the car storage battery before all applications of the unit are completed.
- 3.Please note that the yellow directing wire is connected to the anode terminal(+) or the BAT terminal.
- 4.Change the fuse, the specifications of the fuse for both the automobile and the unit shall be the same.
- 5.Excellent 4-8 ohm speaker is required for perfect performance.

SPECIFICATIONS

FM tuner

Frequency range:.....87.5-108MHz
 Medium frequency:.....10.7MHz $\pm 0.3\%$
 Signal/Noise ratio:.....50dB
 Radio sensitivity:.....10dB

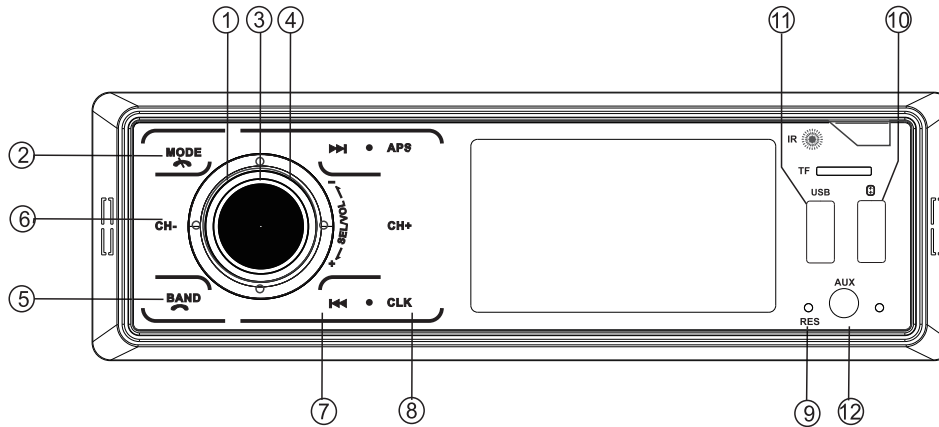
USB/SD

Frequency response.....20Hz-20KHz
 Signal/Noise ratio.....> 50dB
 Harmony distortion T.H.D.....< 3%(1KHz)

Others

MAX. Output power.....4x60w
 Supply voltage.....12-15VDC negative ground
 Speaker impedance.....4-8 ohm /ch
 Demensions.....177x115x50mm
 Weight.....0.79kg

Front Panel Controls and Functions



1. POWER/MUTE:

★ Press it for turning on when it is off.

★ Press it for “mute” function ; Hold it for turning off.

2. MODE:

Press it to switch the mode from radio, BT, USB, SD AUX. When it is on Bluetooth phone call, press it to hang up the call.

3. (1) VOL+, VOL-: Vol Volume adjustment.

(2) Multi function button

★ Press it once for “BAS” , press it twice for “TRE” , a third time for “BAL” , a fourth time for “FAD” .

4. Press it a fifth time for LOUD on/off. Press it a six times EQ choice.
Playback mode: Select INT RPT RDM.
5. BAND/AMS:
When it playing USB/SD, press it to select INT, RPT, RDM playing. Hold it to enter tracks selection.
With the rotating volume control button "No.3", you can select the track.
When on radio, it is for wave switch: FM wave: FM1、FM2、FM3. Hold it for manual storage of stations; Press it to pause when it is playing MP3
When you are on Bluetooth status, press it to redial the last called phone number. When there is calling coming, press it to answer the phone.
6. CH+ button:
CH+button: In playing mode, press it to pause or to resume it. Hold it to play the track of the next folder. In radio mode, press it to select stations. Hold it to memorize the present station under the selected number 1-6 (When you hold on CH+, the station will flash, then press CH+ to select the number you like. Wait for 5 seconds, the station is memorized automatically.)
7. ⏮ / ⏭ button:
In radio mode, hold it for manual station search, press it for automatic station search.
when in playing mode, press it for the last or next track, hold it for fast forward and fast backward.
8. CLK:
Press it to show the time. Hold it to adjust the time with operating Volume button and SEL button.
9. RESET:
Press this button for resume to the state of the factory when something abnormal happens during the running of the unit.
10. USB charging port: connect the phone and car radio by wire for charging.
11. USB Port: use USB alone, do not insert a memory card at the same time.
The digital radio can support USB drives with a 16 GB storage capacity.
Using USB key with a higher capacity can damage device.
12. AUX

Bluetooth connection: Open the Bluetooth setting in your cellphone and find "CAR BT" and connect it, enter pass word "0000". The connection is done.