

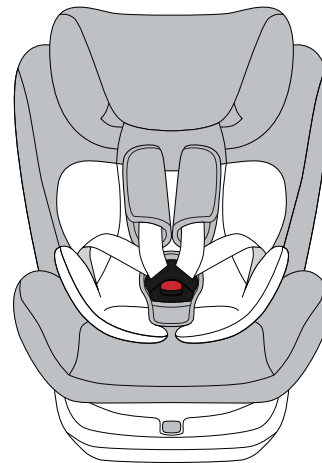
CHILD RESTRAINT SYSTEM

YANGZHOU LETTAS BABY PRODUCT CO.,LTD
Add: HANJIANG IND ZONE, CHAHE, YANGZHOU CITY,
JIANGSU P.R.CHINA
Tel: 0511-85898860
Website: www.reebabycn.com
Reebaby.en.alibaba.com

Reebaby

PRODUCT TYPE: 916

group 0+ I II III 0-36 kg



**IMPORTANT: READ THESE
INSTRUCTIONS CAREFULLY BEFORE
USE AND KEEP FOR FUTURE
REFERENCE.**

If these instructions are not followed, the safety of
a child may be severely endangered.

CATALOGUE

1. Notice.....	3
2. Structure Name.....	4
3. Warning.....	5
4. Safety Seat Use Method.....	8
4.1 How to Use the Harness Buckle.....	8
4.2 Adjust the Headrest in 5-point Harness Installation	8
4.3 Adjust the Height of the Harness.....	9
4.4 Adjust the Length of the Harness.....	10
4.5 Adjust the Recline Angle of the Seat	11
4.6 Adjust the Rotation Angle of the Seat.....	12
4.7 Remove buckle, sleeping pad and Harness.....	13
4.8 Remove the Fabric Cover.....	14
5. installed in car.....	15
5.1 Group 0+(0-13kg)(Position 4) Installed in the rearward facing position with vehicle seatbelt or ISOFIX connector.....	15
5.1.1 Installed in the rearward facing position with vehicle seatbelt and 5-point harness.....	15
5.1.2 Installed in the rearward facing position with ISOFIX connector	16

5.2 Group I (9-18kg)(Position 1-3) Installed in the forward facing position with vehicle seatbelt or ISOFIX connector	18
5.2.1 Installed in the forward facing position with vehicle seatbelt and 5-point harness.....	18
5.2.2 Installed in the forward facing position with ISOFIX connector and 5-point harness.....	19
5.3 Group II III (15-36kg)(Position 2) Installed in the forward facing position with vehicle seatbelt or ISOFIX connector.....	21
5.3.1 Installed in the forward facing position with vehicle seatbelt.....	21
5.3.2 Installed in the forward facing position with ISOFIX and vehicle seat belt.....	22
6. Warranty.....	24
7. Care and Maintenance.....	24
8. Main Technical Parameters.....	25

1.NOTICE

1.1CHILD SAFETY WITHOUT ISOFIX connector (Group 0+I II III)

When using as Universal category (Group 0+I II III), please notice below information:

This is a “Universal” child restraint. It is approved to Regulation No. 44, 04 series of amendments, for general use in vehicles and it will fit most, but not all, car seats.

A correct fit is likely if the vehicle manufacturer has declared in the vehicle handbook that the vehicle is capable of accepting a “Universal” child restraint for this age group.

This child restraint has been classified as “Universal” under more stringent conditions than those which applied to earlier designs which do not carry this notice.

If in doubt, consult either the child restraint manufacturer or the retailer.

Only suitable if the approved vehicles are fitted with lap/3 point/static/with retractor safety-belts, approved to UN/ECE Regulation No. 16 or other equivalent standards.

1.2CHILD SAFETY WITH ISOFIX connector (Group 0+I II III)

When using as Semi-universal category (Group 0+I II III), please notice below information:

This child restraint is classified for “Semi-universal” use and is suitable for fixing into the seat positions of the following cars:

CAR	FRONT	REAR
	Outer	Centre
(Model)	Yes	Yes No

Seat positions in other cars may also be suitable to accept this child restraint. Please refer to the information documents or the retailer’s website for the suitable car model list. If in doubt, consult either the child restraint manufacturer or the retailer any time. Only suitable if the approved vehicles are fitted with lap/3 point/static/with retractor safety-belts and ISOFIX attachments, approved to UN/ECE Regulation No. 16 or other equivalent standards.

Notice regarding Semi-universal ISOFIX child restraint system (in Group 0+):

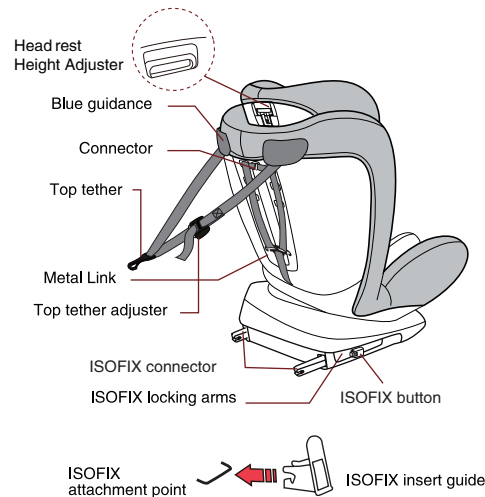
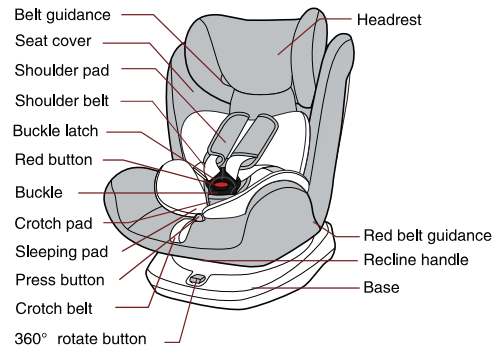
1. This is an ISOFIX CHILD RESTRAINT SYSTEM. It is approved to Regulation No. 44, 04series of amendments for general use in vehicles fitted with ISOFIX anchorages systems.

2. It will fit vehicles with positions approved as ISOFIX positions (as detailed in the vehicle handbook),

depending on the category of the child seat and of the fixture.

3. The mass group and the ISOFIX size class for which this device is intended is: ISOFIX size class E for Group 0+ in rearward facing.

2.STRUCTURE NAME



3.WARNING

IMPORTANT ! Please carefully read and make sure you understand all instructions in this manual and in the vehicle owner's manual related to child safety seats. Install and use the child safety seat as described in the instruction manual. Failure to do this could result in serious injury or death of your child. Keep the instructions together with the child restraint for future reference.

IMPORTANT ! Because of potential medical issues inherent to low birth weight and premature infants, always have a trained professional doctor or hospital staff member assess the suitability of the child restraint prior to leaving the hospital or using the child restraint.

DO NOT modify or attempt to modify the child safety seat in any way.

DO NOT take apart or attempt to take apart this child safety seat except as instructed in this manual.

DO NOT use a child safety seat with damaged or missing parts.

DO NOT use damaged or frayed harness straps or vehicle belt.

NEVER use this child safety seat without the car seat cover.

DO NOT replace the child seat cover or harness with any other than the ones we recommend as these parts are integral to the child safety seat's performance.

NEVER use this child restraint with any other base except ones that the manufacturer permits.

DO NOT use a child safety seat that has been in a crash. A crash can cause damage to the child safety seat that you cannot see.

NO NOT use a second-hand child seat or child seat whose history you do not know.

ALWAYS check the tightness of the restraint and the harness before each use.

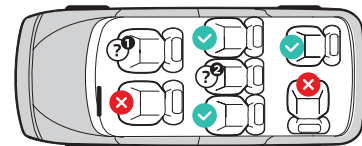
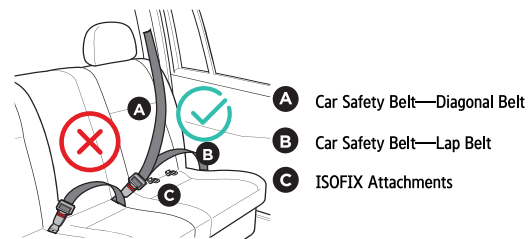
ALWAYS make sure no vehicle belts or harness straps are twisted before each use.

NEVER leave the child in the seat when the harness straps are loose or undone.

NEVER leave your child unattended even for a short time.

DO NOT leave your child in this restraint for an extended period of time.

Regarding the ISOFIX anchorage system, must read vehicle handbook manufacturer manual must be pointed out in the instruction book.



✓ Correct/ Proper ✗ Wrong/ Improper

?¹ When front the of the seat with opened airbag, cannot install in this place.

?² Only with 3-point seat belt and ISOFIX attachments. can install in this place.

DO NOT use in any configuration not shown in the instructions.

NEVER use this child safety seat with 2-point vehicle belts.

DO NOT use alternative routings not shown in these instructions.

MAKE sure that the child safety seat does not become trapped by a folding or moveable passenger seat or in the door of your car.

MAKE sure all folding passenger seats are properly latched.

DO make sure any loose objects such as luggage or books in your car are properly secured as they may cause injuries in the event of an accident. This child restraint should be securely belted in the vehicle even when not in use. In a crash or sudden stop, an unsecured child safety seat may injure other occupants.

ALL occupants of the vehicle should be correctly restrained. Unrestrained passengers may be thrown against other passengers and cause serious injury or death in a crash.

DO NOT allow children to play with or adjust the child safety seat.

NEVER take a child out of the child safety seat when the vehicle is moving.

HOT! Cover the child safety seat when left in direct sunlight. Parts of a child safety seat may become too hot for the child's skin. Always check surfaces before placing a child in the seat. Seat cover may fade in direct sunlight.

MAKE SURE the lap strap of the harness is worn low down, so that the infant pelvis is firmly engaged.

4. SAFETY SEAT USE METHOD.

4.1 HOW TO USE THE HARNESS BUCKLE

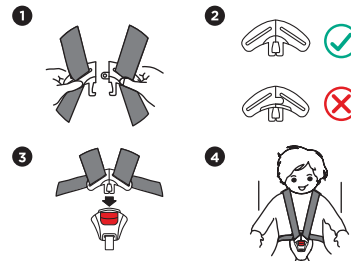
Hold the two buckle latches together.

Make sure the right side is up.

Engage them before putting them into the harness buckle, which should make a CLICK noise.

Pull shoulder straps to remove all slack from the lap section ensuring that the harness is lying flat and the harness buckle is locked.

Open the harness buckle by pressing the red button.



4.2 ADJUST THE HEADREST IN 5-POINT HARNESS INSTALLATION

A correctly adjusted headrest ensures optimal protection for your child in the safety seat:

The headrest must be adjusted so that the shoulder straps are at the same level as your child's shoulders.

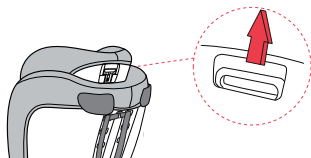


CAUTION! The shoulder straps must not run behind the child's back, at ear height or above the ears.

The shoulder straps are adjusted as follows:

Loosen the shoulder straps of the child seat as much as possible.

Pull the headrest height adjuster, select the correct height of the shoulder straps and engage it in the position that fits your child by releasing the adjuster.



4.3 ADJUST THE HEIGHT OF THE HARNESS

A correctly adjusted harness will ensure that the diagonal seat belt section is optimally positioned, and will give your child optimal protection.

The harness must be adjusted so that there is a space two fingers wide between the harness and your child's body.

Adjust the height of the harness to fit your child:

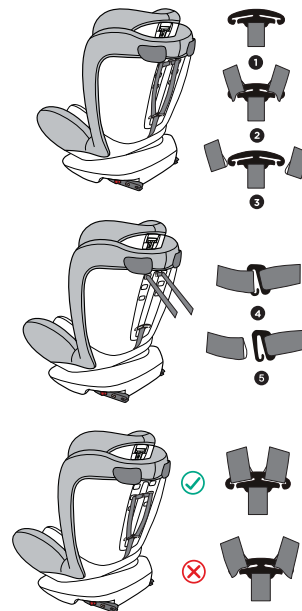
Loosen the shoulder straps in order to access the metal link and connector at the back of the child seat.

Remove the straps from connector, then remove the shoulder straps from the metal link, follow step

①②③④⑤.

From the front of the child seat, again thread the shoulder straps through the desired slots. Make sure both of the straps go through the slots at the same height.

Connect both shoulder straps to the connector and metal link again.



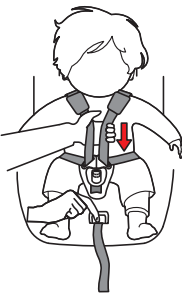
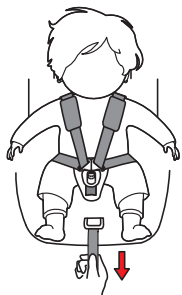
4.4 ADJUST THE LENGTH OF THE HARNESS

To ensure your child's safety, after fixing him/her in the child restraint system and locking the buckle, tighten the harness so that it fits snugly and lies flat against the child's body. It should never be twisted or loose.

To tighten the harness, pull the shoulder strap upwards to remove the slack from the lap sections of the harness and at the same time pull the crotch adjuster belt coming towards you using your other hand. After tightening the seat belt, adjust the shoulder pads to the appropriate position on the chest.

To lengthen the harness, press the button on the lock between the child's legs, then pull the two shoulder straps simultaneously towards you. While you are doing this, please make sure you are holding the harness, and not the harness cover.

CAUTION! Check that the harness straps are not twisted and that they have been correctly inserted in the belt slots of the cover.



4.5 ADJUST THE RECLINE ANGLE OF THE SEAT

This child safety car seat can be adjusted to 4 positions.

Before fixing a child in the child restraint system, the seat must be set on the correct position for each mass group:

Rearward facing use

Group 0+ (0–13kg) use Position 4, lying level only (see picture (4))

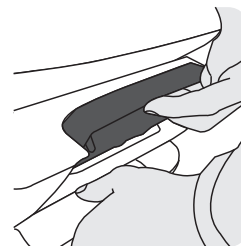
Forward facing use

Group I (9–18kg) use Position 1, 2, 3, which means from first level to third level (see picture (1)(2)(3))

Group II III (15–36kg) use Position 2 only, which means second level (see picture (2))

To achieve this, use the recline handle located in front of the child restraint system between the seat and the base to adjust it to the desired position.

Note: Rotation on the third level then change to lying level.



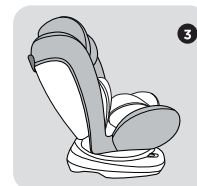
Four levels of inclination are possible:



① first level



② second level



③ third level

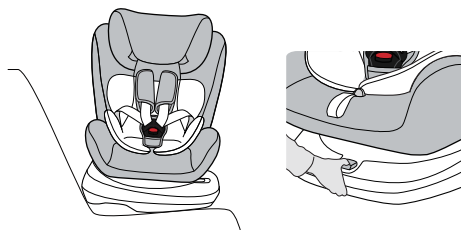


④ lying level

4.6 ADJUST THE ROTATION ANGEL OF THE SEAT

Press the rotation button, the safety car seat could be rotating 360°

ACTION: Before every journey, rotation the seat in both clockwise and anticlockwise direction. To make sure the rotating part is safe.



4.7 Remove buckle, sleeping pad and Harness.

Follow step ①②③④⑤ as 4.3.

Then from the front of the child seat, pull out shoulder straps through the slots.

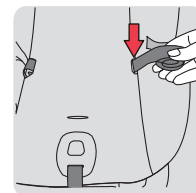
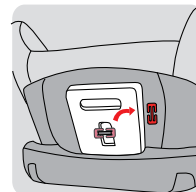
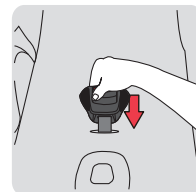
Pull both the shoulder pads and the belts forward through the slots (on the front side of the child seat).

Remove the shoulder pads from the shoulder straps and put them in the storage bag.

Roll the shoulder straps separately on both sides and place them in the slots of the fabric cover.

Grasp the metal plate from underneath, turn it into a vertical position. Push upwards, and slide the metal plate through the slot.

Remove the harness buckle with the crotch pad and store it in the storage bag.



4.8 REMOVE THE FABRIC COVER

1. Remove the 5-point harness.
2. Take off the cover from the backrest and base.
3. Move the headrest of the child seat up to the highest position.
4. First take the cover off the base of the headrest, then remove the cover of the headrest.

To re-fit the cover, simply follow the above steps in reverse.

CAUTION! Never use the child seat without a correctly installed buckle. Make sure that the metal plate is correctly attached.

CAUTION! Check that the harness straps are not twisted and that they have been correctly inserted in the belt slots of the cover.

5. INSTALLED IN CAR

5.1 GROUP 0 + (0-13 KG) (POSITION 4) INSTALLED IN THE REARWARD FACING POSITION WITH VEHICLE SEATBELT OR ISOFIX connector

5.1.1 Installed in the rearward facing position with vehicle seatbelt and 5-point harness

Pull the vehicle seatbelt and pass the lap belt section through the red belt guidance and under the sleeping cushion.

Pass the diagonal seat belt section through the blue guidance on the back of the child seat.

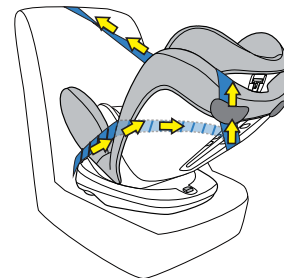
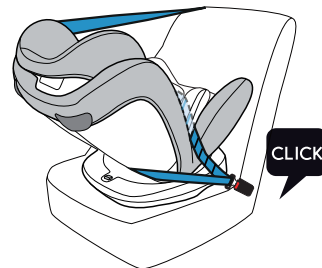
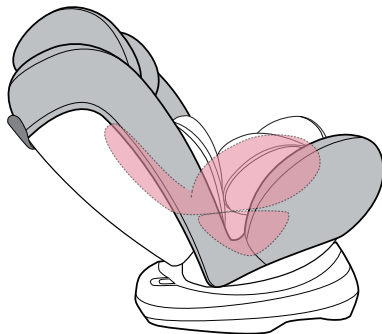
Fasten the seat belt and pull it tight, ensuring that the seat belt is not twisted.

NOTE:

For children of this size, the child seat must only be installed in the rearward facing position and at a maximum angle of inclination (lying level). To make sure that the car seat has been installed correctly, please shake it before use.

DON NOT twist the belt!

Ensure that the buckle tongues are properly locked into the vehicle seat buckle – you will hear an audible **CLICK!**



0-36 kg.

5.1.2 Installed in the rearward facing position with ISOFIX connector

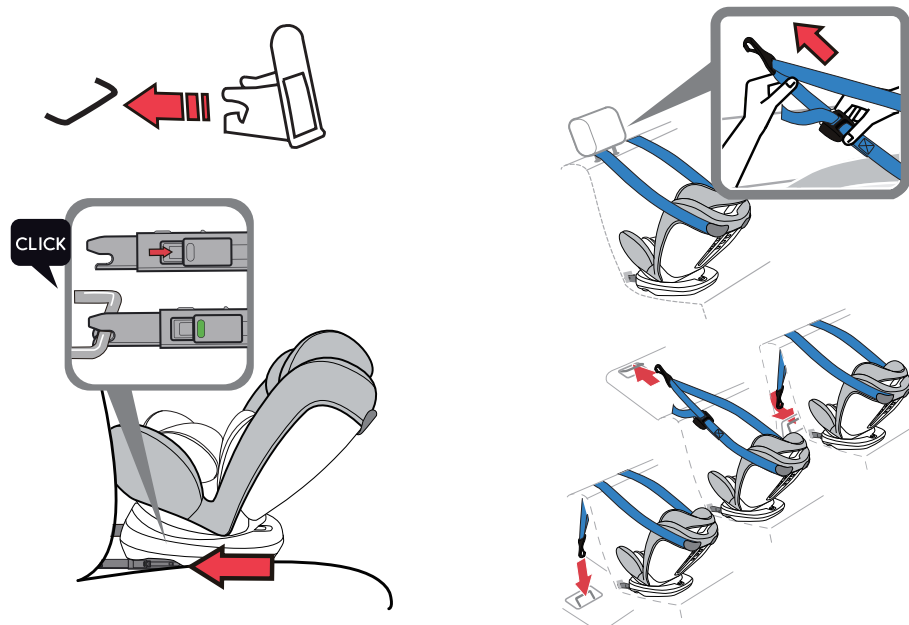
With the cut-out facing upwards onto the two ISOFIX attachment points of your vehicle.

NOTE:The ISOFIX attachment points are located between the surface and the backrest of the vehicle seat.

Press the ISOFIX adjuster to pull out both locking arms, from the under of base pull the locking arm to and fro until you hear an audible **CLICK** which indicates they are fully engaged. And on both sides of the locking arms, the button turn into green safety color.

Pull out the top tether, and press the release button, pull the top tether long enough to hang the latch on the back of the car seat.

Fixed the latch on the fixed point, and the position of the fixed point are shown in the picture (one of the three position). Make sure the hook is tightened up.



5.2 GROUP I (9-18KG) (POSITION 1-3) INSTALLED IN THE FORWARD FACING POSITION WITH VEHICLE SEATBELT OR ISOFIX CONNECTOR

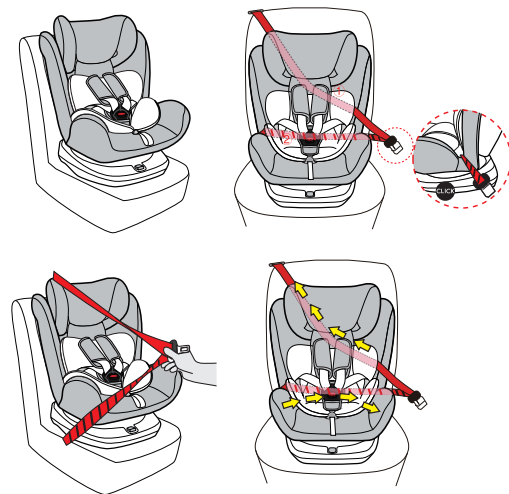
5.2.1 Installed in the forward facing position with vehicle seatbelt and 5-point harness

Place the child seat forward facing on the vehicle seat
(in the direction of travel).

Pull the diagonal belt section through between the
headrest and backrest. Place the lap belt section in
the light red belt guidance.

Pull out safety belt from the back to the side, lap belt
section respectively from the red guidance of the
base. One side of the diagonal belt through the
backrest and the red guidance, another side along the
upper inside.

Using your knee to press down on the child seat,
tighten the vehicle seat belt as follows:
Pull on the lower part of the diagonal seat belt
section near the vehicle seat buckle to tighten the lap belt
section.



5.2.2 Installed in the forward facing position with ISOFIT connector and 5-point harness.

With the cut-out facing upwards onto the two ISOFIX attachment points of your vehicle.

NOTE: The ISOFIX attachment points are located between the surface and the backrest of the vehicle seat.

Press the ISOFIX adjuster to pull out both locking arms, from the under of base pull the locking arm to and fro until you hear an audible **CLICK** which indicates they are fully engaged. And on both sides of the locking arms, the button turn into green safety color.

Pull out all of the safety belt from the lap machine slowly, diagonal section should through between the headrest and backrest. Place the lap belt section in the light red belt guidance.

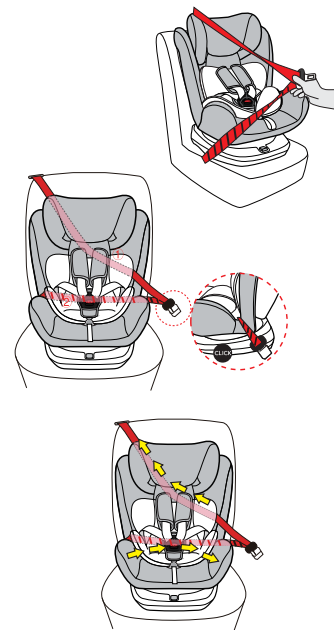
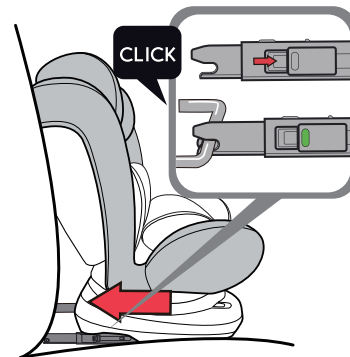
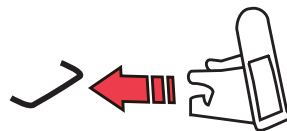
Pull out safety belt from the back to the side, lap belt section respectively from the red guidance of the base. One side of the diagonal belt through the backrest and the red guidance, another side along the upper inside.

NOTE: ①② Place this two safety belt behind the sleeping pads, between the backrest and the sleeping pads.

Using your knee to press down on the child seat, tighten the vehicle seat belt as follows:

Pull on the lower part of the diagonal seat belt section near the vehicle seat buckle to tighten the lap belt section.

NOTE: This step is for tightening the safety belt, more stable for children's safety.



5.3 GROUP II III (15–36KG) (POSITION 2) INSTALLED IN THE FORWARD FACING POSITION WITH VEHICLE SEATBELT OR ISOFIT CONNECTOR

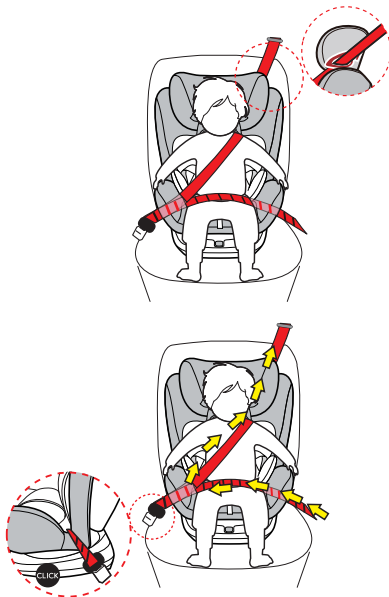
5.3.1 Installed in the forward facing position with vehicle seatbelt

NOTE: When you use this safety car seat in group2、3, please remove the 5-point harness 、 sleeping pads and the triangle pads.

Guide the diagonal seatbelt section into the light red belt guidance of the headrest until it lies completely in the belt guidance and is not twisted.

NOTE: Make sure that the diagonal seatbelt section runs over your child's shoulder bone, and not in front of his or her neck.

Place the diagonal and lap sections of the vehicle's seatbelt through the belt guide indicated on the child safety car seat. Lock the tip of the buckle into the vehicle seat buckle with a CLICK noise.



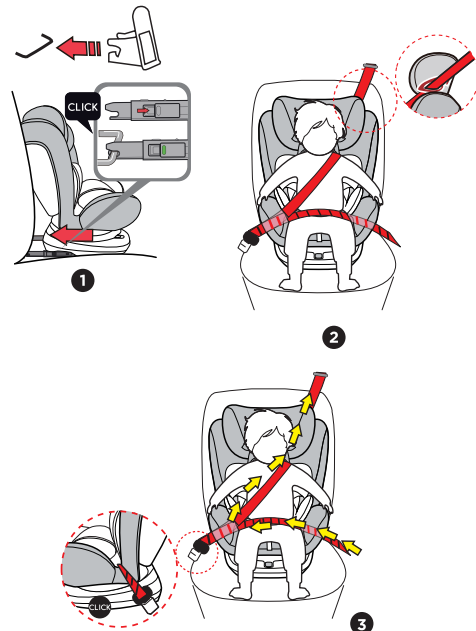
5.3.2 Installed in the forward facing position with ISOFIT and vehicle seat belt

Press the ISOFIT adjuster to pull out both locking arms, from the under of base pull the locking arm to and fro until you hear an audible CLICK which indicates they are fully engaged. And on both sides of the locking arms, the button turn into green safety color.

Guide the diagonal seatbelt section into the light red belt guidance of the headrest until it lies completely in the belt guidance and is not twisted.

NOTE: Make sure that the diagonal seatbelt section runs over your child's shoulder bone, and not in front of his or her neck.

Place the diagonal and lap sections of the vehicle's seatbelt through the belt guide indicated on the child safety car seat. Lock the tip of the buckle into the vehicle seat buckle with a CLICK noise.



CAUTION! The diagonal seat belt section must run diagonally backward. You can adjust the course of the belt with your vehicle's adjustable belt deflector on both sides.

Shake the child safety car seat to make sure it is securely attached.

Place the lap belt section on the other side of the child seat in the light red belt guide.

CAUTION! The lap belt section must lie as low as possible over your child's hips on both sides.

Guide the diagonal seat belt section into the red belt holder of the headrest until it lies completely in the belt holder and is not twisted.

TIPS! If the backrest conceals the belt holder, you can adjust the headrest upwards. The diagonal seatbelt section can then easily be inserted. Now return the headrest to the proper height.

Make sure that the diagonal seat belt section runs over your child's shoulder bone, and not in front of his or her neck.

TIPS! You can adjust the height of the headrest again in the vehicle.

CAUTION! The diagonal seat belt section must run diagonally backward. You can adjust the course of the belt with your vehicle's adjustable belt deflector.

CAUTION! The diagonal seat belt section must never lead forward to the vehicle's belt deflector. In this case, only use the child seat on the rear seat.

For the safety of your child, before every journey in the car check that:

- The child safety seat is securely fastened;
- The lap belt section runs through the light red belt guides on both sides of the seat cushion;
- The diagonal seatbelt section also runs through the red instruction guide;
- The diagonal seatbelt section runs through the red belt holder of the headrest;
- The diagonal seatbelt section runs diagonally backward;
- The harness is tight and not twisted.

CAUTION! If your child attempts to open the safety buttons or the harness buckle, make sure you stop at the earliest opportunity. Check that the child safety seat is correctly attached and make sure that your child is properly secured. Teach your child about the dangers involved.

6. WARRANTY

The warranty period starts from the date of purchase and is valid for a period of 24 months. The warranty is only applicable to material and production defects. The date of purchase can only be proven with the original sales receipt. This warranty is only applicable to the original owner and is not transferable. The warranty is only applicable to products that have not been adapted by the user. In the case of any defects, the owner is required to return the product to the retailer. The manufacturer is not liable for any damages other than those to products supplied or manufactured by REEBABY

7. CARE AND MAINTENANCE

Periodically inspect your child seat for worn or damaged parts. If damaged parts are found, replace the child seat. Keep the child seat clean. Do no lubricate any parts of the child seat.

To prolong the life of your nursery product, keep it clean and do not leave it in direct sunlight for extended periods of time.

Removable fabric covers and trims may be cleaned using warm water with a household soap or a mild detergent. Allow it to dry fully, preferably away from direct sunlight.

CLEANING THE BUCKLE

Food, drink, or other debris may collect inside the harness buckle which can affect proper functioning. Wash in warm water until clean. Be sure you can hear an audible click to make sure the buckle is working properly.

CLEANING THE HARNESS AND SHELL

Sponge clean using warm water and mild soap; do not use any other cleaning agents.

STORAGE

Store in a safe, dry place and away from heat and direct sunlight. Avoid placing heavy objects on top of the seat.

8.MAIN TECHNICAL PARAMETERS

